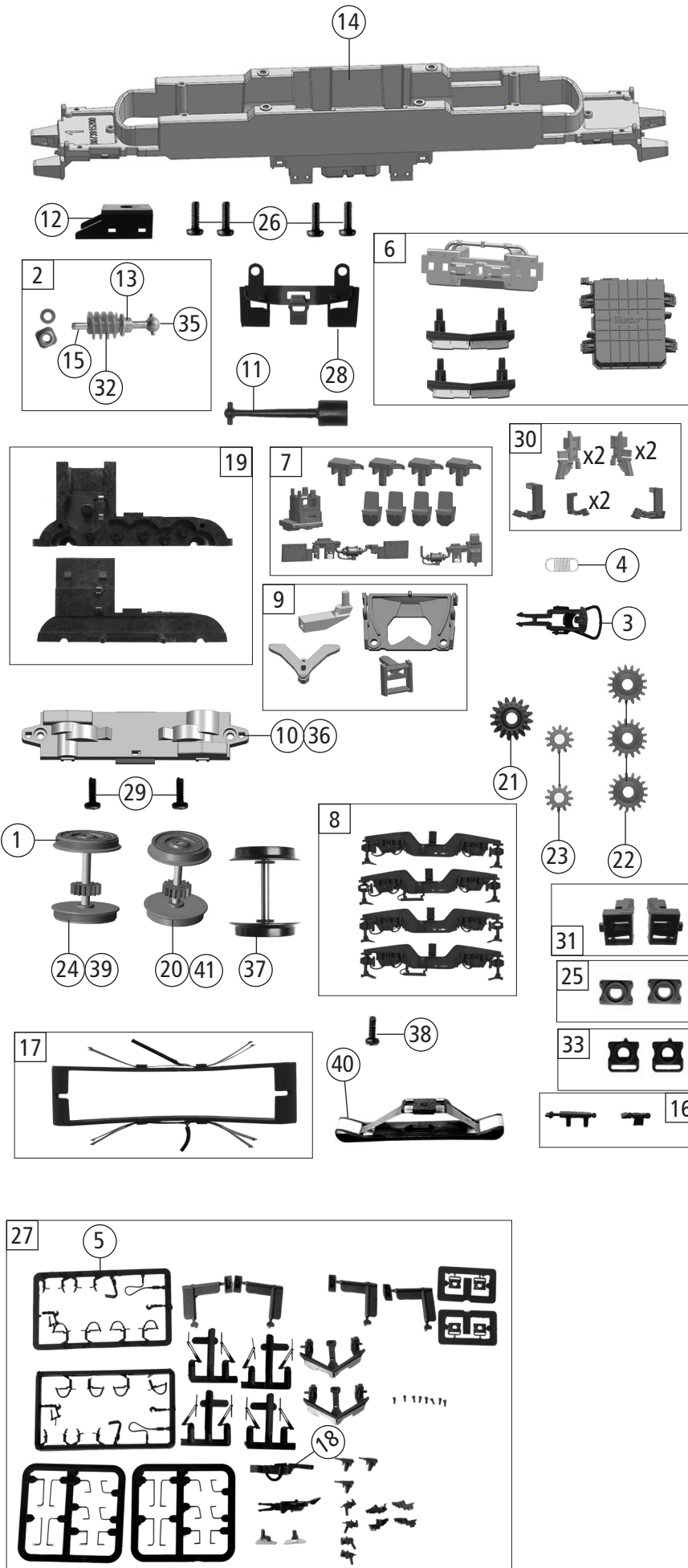


| Pos. Nr. Pos.no. | Beschreibung Description | Art.-Nr. Art.no. | Preisgruppe Price bracket |
|---------------------|---|---------------------|------------------------------|
| 70321 | MRCE/B. VECTRON | | |
| 70322 | | | |
| 78321 | | | |
| 1 | Gehäuse kpl.Betr.Nr. 6193 718-4 Body complete loco nr. 6193 718-4 | 154097 | 38 |
| 2 | Stromabnehmer Holland Pantograph Holland | 85401 | 23 |
| 3 | Dachbaugruppe kpl. Roof assy complete | 152839 | 35 |
| 4 | Stromabnehmer Typ 8 DB Pantograph tipe 8 | 85353 | 19 |
| 5 | GF-Schraube M2x5 mm Self-tapping screw | 114966 | 3 |
| 6 | Führerstand und Himmel Driver's cab and ceiling | 152351 | 8 |
| 7 | TS-Dachgitter Part set roof grid | 141150 | 10 |
| 8 | TS-Stirn + Seitenfenster Part set front and side window | 152317 | 10 |
| 9 | TS-Abdeckungen Part set covers | 141137 | 4 |
| 10 | TS-Lichtleiter und Scheinwerfer Part set light conductor and headlight | 141148 | 14 |
| 11 | Dachleitungen Roof wires | 141157 | 8 |
| 12 | Türgriff Door handrail | 141154 | 4 |
| 13 | TS-Wischer links und rechts,Horn Part set wiper left and right,signal horn | 141155 | 6 |
| 14 | Stromabnehmer SBB Pantograph SBB | 85361 | 19 |
| 15 | Stromabnehmer Typ 8 IT Pantograph tipe 8 | 187580 | 23 |
| 16 | TS-Isolatoren Part set isolators | 141156 | 5 |
| 17 | Antenne Antenna | 148354 | 3 |
| 18 | Puffer eckig Rectangular buffer | 122789 | 3 |
| 19 | TS-Lautsprecherbox und Platten Part set loudspeaker box and plates | 141139 | 5 |
| 20 | SK-Schraube M1,6x5 mm SK-Screw | 115317 | 4 |
| 21 | Platine kpl.m.LED-Platine PCB complete with LED-PCB | 145652 | 23 |
| 22 | Brückenstecker Jumper | 133241 | 10 |
| 23 | Motor m. 2 Schwungm.+Kardansch. KM Motor with 2 flywheels and cardan reception | 147914 | 25 |
| 24 | Kardanschale kurz 1,5mm Cardan reception short | 87129 | 4 |
| 25 | Motordistanzplatte KM Motor spacer | 145557 | 4 |
| 26 | Motorkontaktfeder 7 mm Motor contact spring | 145561 | 4 |
| 27 | Motordämpfer Motor silencer | 113376 | 4 |
| 28 | Motorkontaktfeder 14 mm Motor contact spring | 145560 | 4 |
| 29 | Lokführer Loco driver | 110407 | 6 |
| 30 | TS-Isolatoren Part set of isolators | 141206 | 7 |
| 31 | Frontplatte Front plate | 154098 | 8 |
| 32 | Antenne kurz Antenna short | 141151 | 3 |
| 33 | Innenbeleuchtung Interior lighting | 152318 | 4 |
| 34 | Steckdose VECTRON - umbragrau Socket VECTRON | 141163 | 3 |
| 35 | TS-Griffe Part set handles | 141238 | 6 |
| 36 | TS - LZB Antennen - umbragrau Part set LZB antenna | 122803 | 6 |
| 37 | Feder Stromabnehmer Pantograph spring | 96520 | 3 |
| 38 | TS-Flansch. Antenne Part set-Flange. Antenna | 146345 | 9 |
| 39 | S-ACT Balisantenne Antennas | 146560 | 5 |
| 40 | Schleifstück VECTRON IT Grind part | 138153 | 8 |
| 41 | LZB Radar ABS Lzb radar ABS | 152315 | 3 |
| Sound | | | |
| 42 | Platine kpl.m.LED-Platine f. So. PCB complete with LED-PCB f. S. | 145656 | 24 |
| 43 | Lautsprecher Loudspeaker | 129524 | 13 |
| 44 | Sounddecoder Sound-decoder | 147377 | 39 |



| Pos. Nr. Pos.no. | Beschreibung Description | Art.-Nr. Art.no. | Preisgruppe Price bracket |
|------------------------|--|---------------------|------------------------------|
| 70321 | MRCE/B. VECTRON | = | |
| 70322 | | = | 🔊 |
| 78321 | | ~ | 🔊 |
| 1 | Haftrings. 10Stk. 12,9-14,6 mm Traction tyre set, 10 pcs. | 40070 | --- |
| 2 | Schneckensatz mit Kardankugel Set of worm gear incl. cardan ball | 148576 | 13 |
| 3 | Standardkupplung Standard coupling | 89246 | 6 |
| 4 | Zugfeder Draw spring | 86208 | 3 |
| 5 | TS-Bremsschläuche und Zughaken Part set of brake tubes & coupling hooks | 139832 | 7 |
| 6 | TS-Schienenräumer, Trafowanne Part set rail guard, transformer tub | 141140 | 12 |
| 7 | TS-Sandkasten, Antenne Part set sand box, antenna | 141144 | 7 |
| 8 | Drehgestellblende links und rechts Bogie left and right | 142024 | 15 |
| 9 | TS-Kinematik und Deichsel Part set kinematics and drawbar | 141136 | 8 |
| 10 | Getriebeboden Gear bottom | 147620 | 7 |
| 11 | Kardanwelle Cardan shaft | 108332 | 4 |
| 12 | Schneckendeckel Worm gear cover | 122822 | 4 |
| 13 | Lager für Schneckenachse Bearing for worm gear axle | 89749 | 6 |
| 14 | Grundrahmen Basic frame | 142014 | 16 |
| 15 | Beilagscheibe Washer | 86108 | 3 |
| 16 | TS-Blendensteckteile Set of cover plug-in parts | 122956 | 5 |
| 17 | Kontakthalter mit Litzen Contact support with leads | 137826 | 9 |
| 18 | Kurzkupplung-Vorentkupplung Short coupling- pre-uncoupling | 115550 | 6 |
| 19 | Getriebebesatz 2-teilig Gear set 2-parts | 147619 | 11 |
| 20 | Radsatz m. Zahnrad o. Haftring Wheelset w/ gear wheel w/o traction tyre | 141160 | 12 |
| 21 | Schneckenrad doppelte Z=16/17 Worm gear wheel double | 86419 | 6 |
| 22 | Zahnrad Z=17 M=0,4 Gear wheel | 86418 | 5 |
| 23 | Zahnrad Z=12 M=0,4 Gear wheel | 94953 | 3 |
| 24 | Radsatz m. 2 Haftringen m. Zahnrad Wheelset w. 2 traction tyres w. gear wheel | 141161 | 13 |
| 25 | Pufferflansch links und rechts Buffer flange left and right | 136487 | 5 |
| 26 | GF-Schraube M2x6 mm Self-tapping screw | 114828 | 3 |
| 27 | Zurüstbeutel Bag of accessories | 154099 | 19 |
| 28 | Schürze Skirt | 154096 | 6 |
| 29 | GF-Schraube M1,6x4 mm Self-tapping screw | 114850 | 3 |
| 30 | TS- Antennen, Flansch Part set -Antenna, flange | 146345 | 9 |
| 31 | Pufferschürzen li.+ re. Buffer skirts L+R | 122804 | 6 |
| 32 | Schnecke Wormgear | 86704 | 6 |
| 33 | Pufferflansch li+re Vitrine Buffer flange left and right | 141162 | 4 |
| 34 | UIC-Dose UIC-socket | 141559 | 3 |
| 35 | Kardankugel Cardanball | 109614 | 4 |
| AC-Wechselstrom | | | |
| 36 | Getriebeboden AC Gear bottom AC | 130040 | 8 |
| 37 | Radsatz o. Haftring o. Zahnrad AC Wheelset w/o traction tyre w/o gear wheel AC | 141242 | 11 |
| 38 | Schraube M1,5x5 mm Screw | 108137 | 3 |
| 39 | Radsatz m. 2 Haftringen m. Zahnrad AC Wheelset w. 2 traction tyres w. gear wheel AC | 141168 | 13 |
| 40 | Schleifer 42 mm Center pick-up | 86030 | 14 |
| 41 | Radsatz m. Zahnrad o. Haftring AC Wheelset w. gear wheel w/o traction tyre AC | 141167 | 12 |